



SHARING EXPERTISE

824 Twelfth Avenue, Bethlehem, Pa. 18018

[www.bbraunusa.com](http://www.bbraunusa.com) | 610-691-5400

FIND OPENINGS: [www.bbraunusa.com/en/company/careers.html](http://www.bbraunusa.com/en/company/careers.html)

### Business Description

B. Braun Medical Inc., a leader in infusion therapy and pain management, develops, manufactures, and markets innovative medical products and services to the healthcare industry. Other key product areas include nutrition, pharmacy admixture and dialysis. The company is committed to eliminating preventable treatment errors and enhancing patient, clinician and environmental safety. B. Braun Medical is headquartered in Bethlehem, Pennsylvania and is part of the B. Braun Group of Companies in the U.S., which includes B. Braun Interventional Systems, Aesculap® and CAPS®.

Globally, the B. Braun Group of Companies employs more than 64,000 employees in 64 countries. Guided by its Sharing Expertise® philosophy, B. Braun continuously exchanges knowledge with customers, partners and clinicians to address the critical issues of improving care and lowering costs. To learn more about B. Braun Medical, explore our website [www.bbraunusa.com](http://www.bbraunusa.com).

### Knowledge, Skills, and Abilities Needed

We're looking for employees who are or have...

- Safety-minded
- Quality-oriented
- Technical Aptitude
- Teamwork/communication skills

### Connect with us on Social Media!



@bbrauninternational



B.Braun Medical Inc.



@bbraun\_com

# B | BRAUN

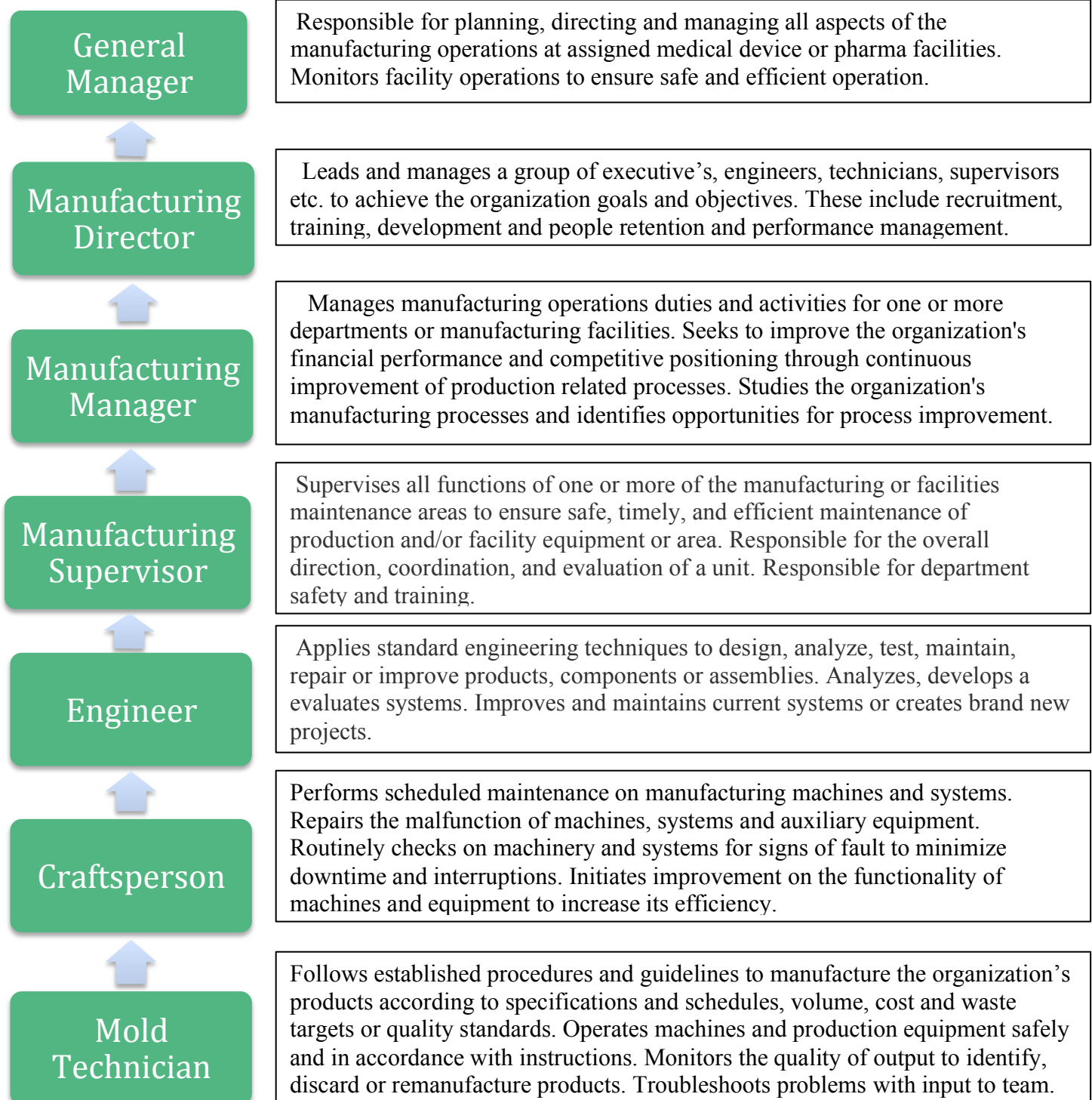
## SHARING EXPERTISE

### CAREER PATHWAY

824 Twelfth Avenue, Bethlehem, Pa. 18018

[www.bbraunusa.com](http://www.bbraunusa.com) | 610-691-5400

FIND OPENINGS: [www.bbraunusa.com/en/company/careers.html](http://www.bbraunusa.com/en/company/careers.html)



***START HERE***