



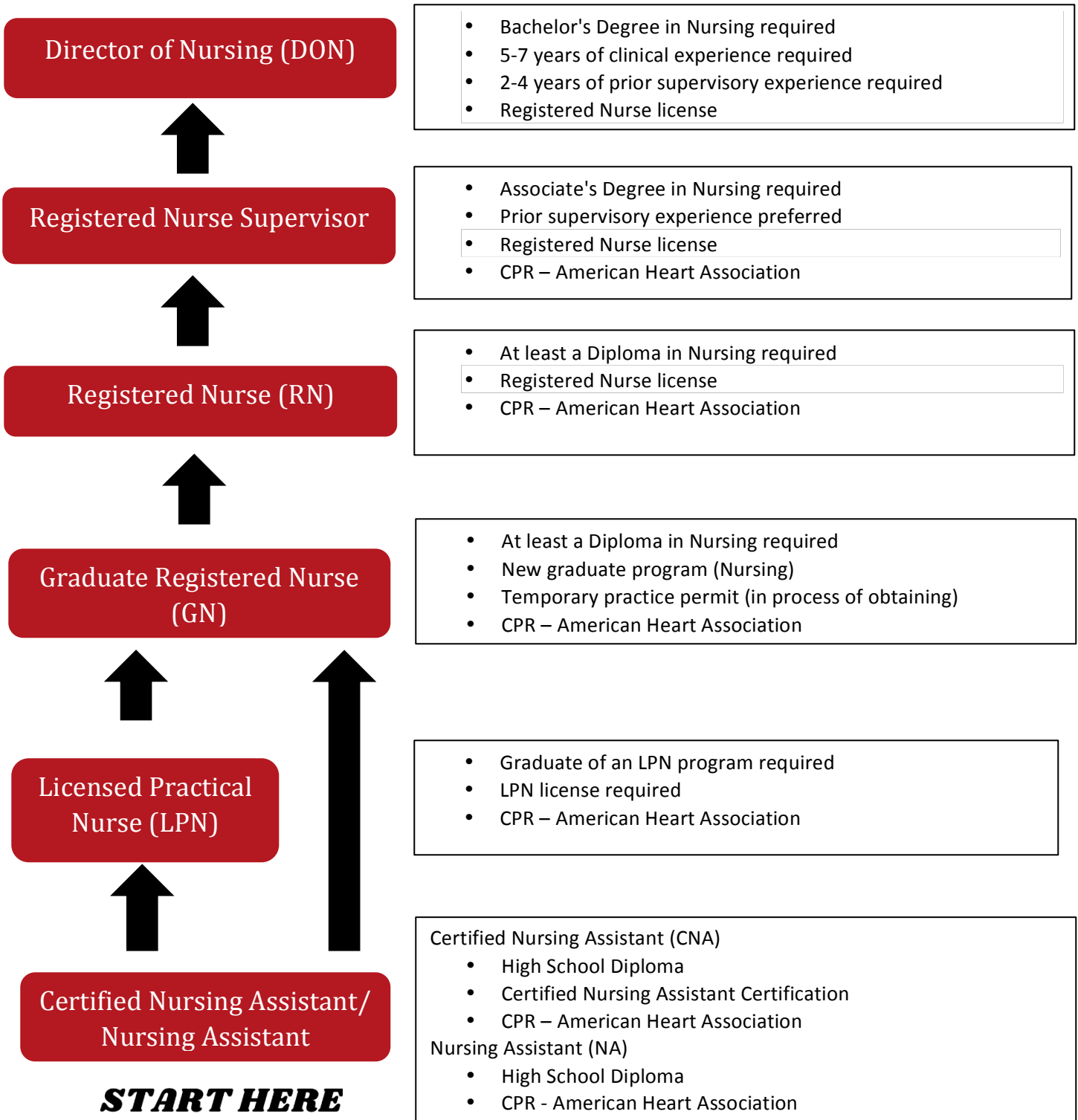
NURSING CAREER PATHWAY

850 S. 5th Street, Allentown, PA 18103

484-894-1659

<https://www.goodshepherdrehab.org/>

JOB OPENINGS: <https://www.goodshepherdrehab.org/careers/>





NURSING CAREER PATHWAY

850 S. 5th Street, Allentown, PA 18103

484-894-1659

<https://www.goodshepherdrehab.org/>

JOB OPENINGS: <https://www.goodshepherdrehab.org/careers/>

About Good Shepherd

Good Shepherd Rehabilitation Network is a nationally recognized, not-for-profit rehabilitation leader committed to transforming lives through expertise, innovation and compassion. Good Shepherd provides an exceptional patient experience for all ages and stages by developing leading-edge solutions, often for complex medical situations; serving as a test site for the newest rehabilitation technologies; and inspiring hope in all we do. Headquartered in Allentown, Pennsylvania, Good Shepherd also partners with Penn Medicine to provide rehabilitation and specialty services in the greater Philadelphia area and New Jersey through Good Shepherd Penn Partners.

Our Mission

Motivated by the divine Good Shepherd, and the often complex physical and cognitive rehabilitation needs of our communities, our mission is to enhance lives, maximize function, inspire hope and promote dignity and well-being with expertise, innovative care and compassion.

Knowledge, Skills, and Abilities

We are looking for employees who...

- Provide compassionate care to our patients
 - Provide excellent service
- Strive to understand the needs of the community and build/maintain relationships



@gsrehab



GoodShepherdRehab



@GSRN



@goodshepherdrehab



Good Shepherd Rehabilitation Network