



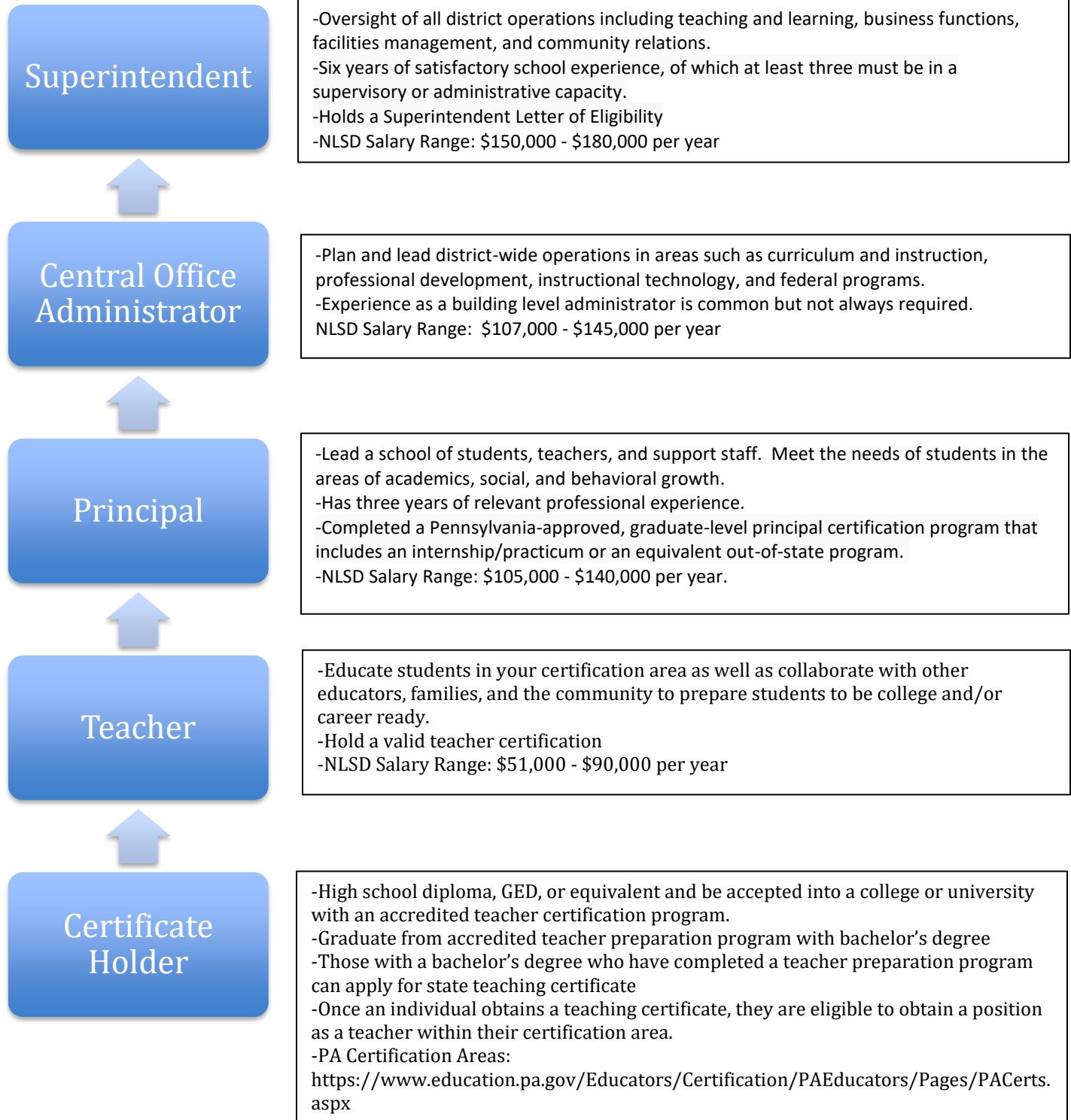
CAREER PATHWAY

1201 Shadow Oaks Lane, Slatington, PA 18080

610-767-9800

NLSD.org

FIND OPENINGS: <https://www.nlsd.org/domain/51>





CAREER PATHWAY
1201 Shadow Oaks Lane, Slatington, PA 18080
610-767-9800
NLSD.org
FIND OPENINGS: <https://www.nlsd.org/domain/51>

Business Description

The mission of the Northern Lehigh School District community is to create a challenging and supportive environment dedicated to meeting the diverse educational needs of all learners.

We believe: All students can learn and succeed; Positive attitude and self-esteem enhance the learning process; Learning is a lifelong process; Education has the responsibility to meet each learner's needs; The educational system has a role as a support center for student and community social services; Student achievement and motivation are enhanced by a quality learning environment; Multicultural awareness is an integral part of a student's education; The community and education systems are interdependent; Ongoing staff development is essential to quality learning; and Communications skills are essential to success.

Our Vision

In our vision of the Northern Lehigh School District, parents, school, and community will work together to achieve quality education goals and remain accountable to all learners. As we instill a love of learning as a lifelong pursuit for each individual, we will strive for a renewed sense of community pride and involvement. Education will take place in a safe environment where learning is fun.

State-of-the-art technology and a broadened curriculum will provide a wide range of academic and extracurricular activities. We will encourage success for each learner by providing a system of alternative strategies for instruction and assessment.

Knowledge, Skills, and Abilities Needed

We're looking for employees who are or have...

- Team-working skills
- A passion for helping children learn
- A desire to continuously learn more

Connect with us on Social Media!



@NorthernLehigh



@theslatenews



NLSD4U Media