



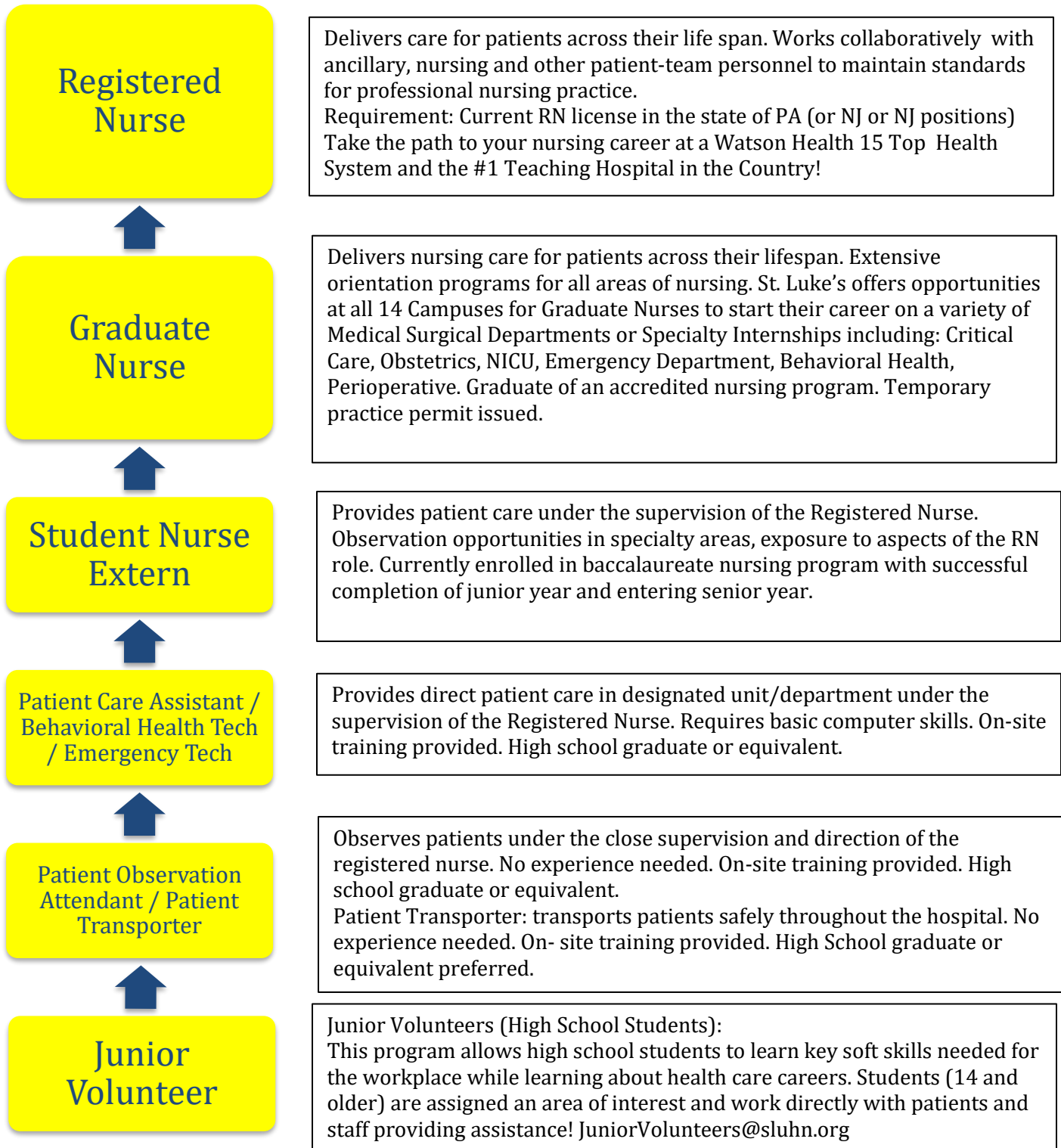
CAREER PATHWAY

SLUHN.ORG

1-866-STLUKES (785-8537)

FIND OPENINGS: *WhereCareersAreMade.org*

Search openings at our multiple campus hospitals throughout the Lehigh Valley and surrounding areas!





SLUHN.ORG

FIND OPENINGS: *WhereCareersAreMade.org*

Business Description

St. Luke's has been delivering exceptional patient care for 150 years and has earned the distinction of being a trusted health care provider because of our quality, safety and patient-centric care.

We are proud of our diverse workforce of over 17,000 employees that bring unique skills and experiences to St. Luke's and provides award-winning care to our communities. We not only take care of patients, we take care of each other...like a family.

At St. Luke's, we encourage our employees to expand their knowledge and advance their careers in a supportive environment through growth opportunities and continuing education. As our footprint of 14 campuses continues to expand, we offer career opportunities across all patient care services as well as other support areas including but not limited to: Professional/Technical, Hospitality and Food Service, Facilities, and Supply Chain.

Knowledge, Skills & Abilities

We are looking for employees who . . .

- Provide compassionate care to our patients
- Provide respect to the value, diversity, and each other
- Provide flexibility in our constantly changing environment

Connect with us on Social Media!



@slhhn



St. Luke's Hospital

<https://www.linkedin.com/company/st--luke's-hospital/>



@mystlukes



@mystlukes



<https://www.youtube.com/stlukestube>